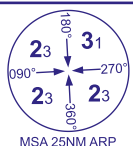
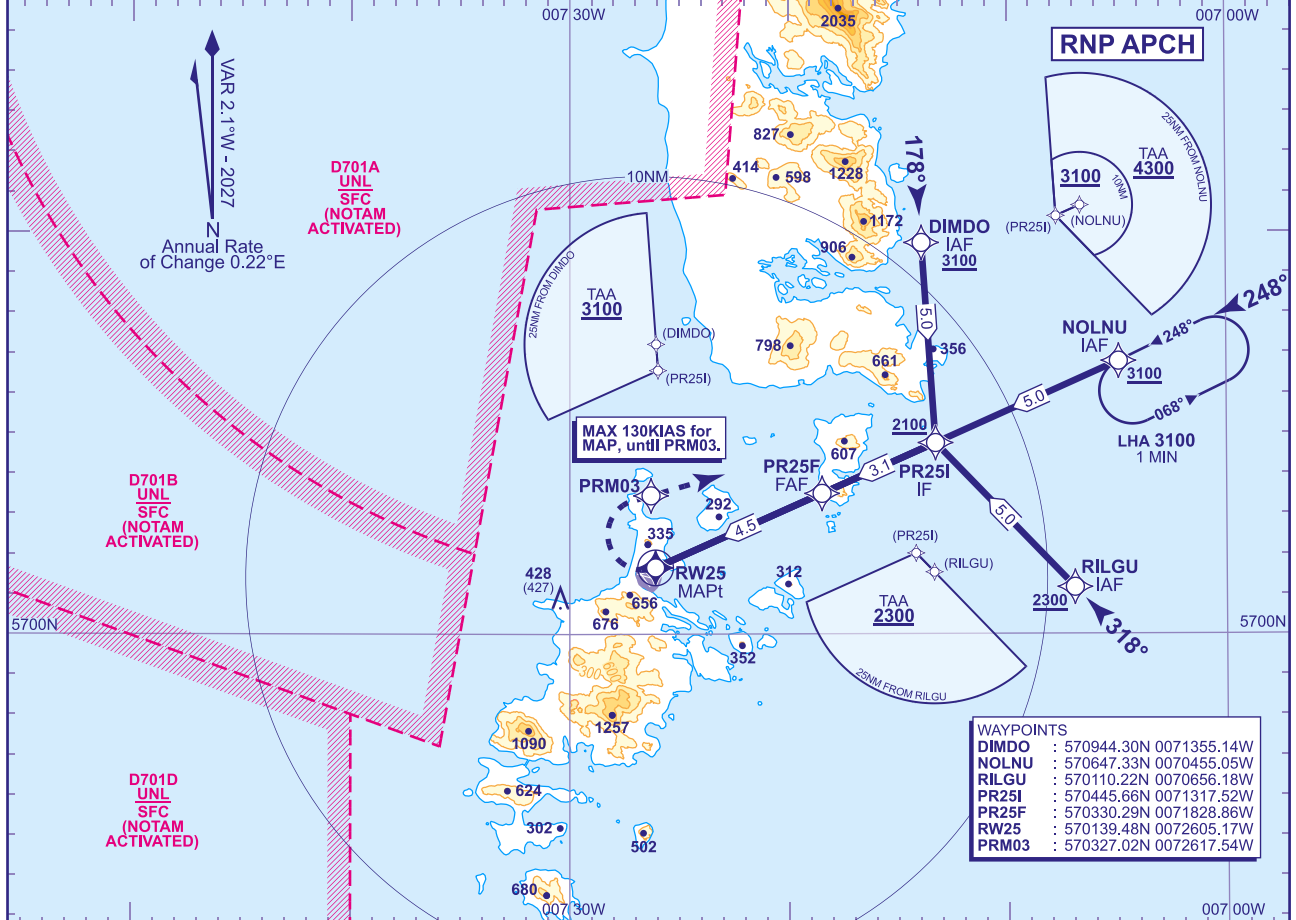


INSTRUMENT APPROACH CHART - ICAO

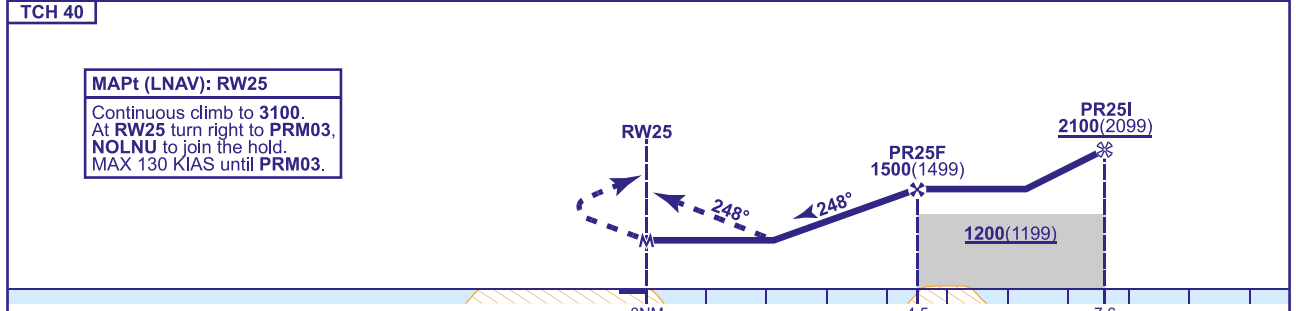
BARRA  
RNP  
RWY 25  
(ACFT CAT A,B)



AFIS 118.080	BARRA INFORMATION	AD ELEVATION 5	TRANSITION ALTITUDE 3000
		THR ELEVATION 1	
		OBSTACLE ELEVATION 428 AMSL (427) (ABOVE THR)	
		BEARINGS ARE MAGNETIC	



RECOMMENDED PROFILE Gradient 5.24%, 320FT/NM		
NM to RW25	4	3
ALT(HGT)	1320(1319)	1000(999)



Aircraft Category		A	B
OCA (OCH)	LNAV	830(829)	830(829)
VM(C)OCA (OCH AAL)		Not Authorised	
		North of RWYs 250°M clockwise to 160°M	
		840(835)	840(835)

Rate of descent	G/S KT	160	140	120	100	80
	FT/MIN	850	740	640	530	420

**NOTE**

- 1 High ground lies in the vicinity of the missed approach area. Do not depart from procedure unless in VMC.
- 2 Severe turbulence can occur when wind exceeds 30KTS at 2000 within the arc 160°T - 240°T.
- 3 Use of this RNP procedure is strictly PPR from the aerodrome operator.
- 4 Prior to commencing the procedure, pilots are to broadcast on AFIS 118.080 with flight details and intentions.